

## LESSON 1 - ASSIGNMENT

1. Using the picture of a cell supplied below label the parts of a living animal cell, including:

- Microtubule
- Cilia
- Golgi complex
- Centrioles
- Microvilli
- Glycogen
- Peroxisome
- Secretory vesicle
- Lysosome
- Mitochondrion
- Nucleus
- Nucleolus
- Chromatin
- Nuclear envelope
- Microfilament
- Free
- Cytoplasm
- Ribosomes
- Endoplasmic reticulatum

2. Explain (in one sentence for each), the function of those components of a human cell, as listed in question 1

3. Label the components of different types of body tissues using figure 1 supplied below, including:

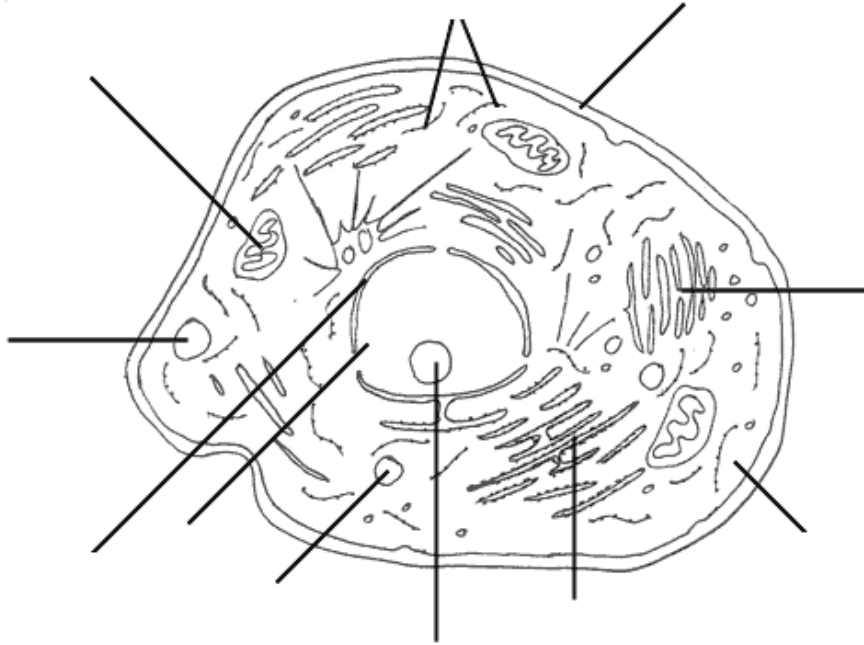
- Epithelial tissue
- Connective tissue
- Muscle tissue
- Nervous tissue

4. Prepare a summary explaining the function of the main types of human body tissues. Submit approx 1 page of work.

5. Explain, (in a paragraph for each) and in your own words, 3 problems that can occur with different human tissues.

6. Explain cellular division (mitosis and meiosis) using your own illustrations. Submit 1 page.

## Organelles of the Cell



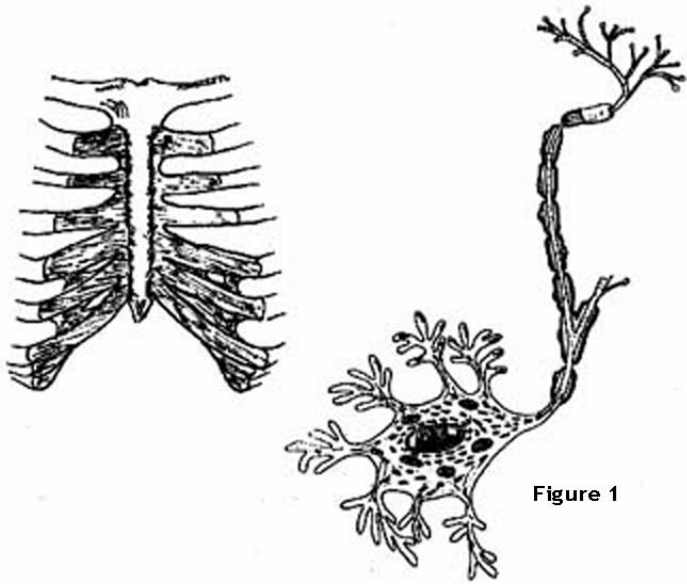
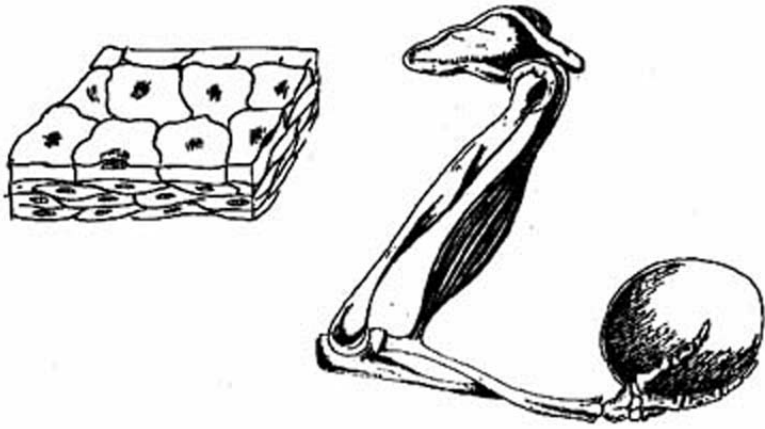


Figure 1